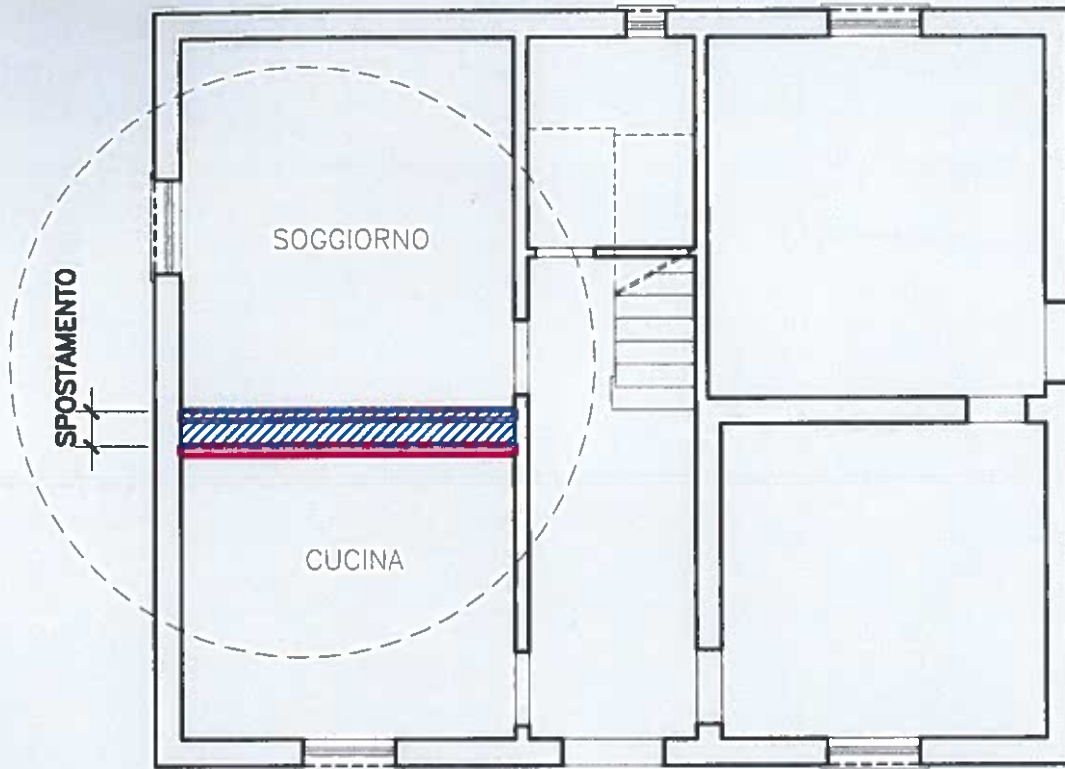


ESEMPIO: CALCOLO SUPERFICIE SPOSTAMENTO



MODIFICHE DIMENSIONI APERTURE FRONTE EDIFICIO

Sup. Fronte= $HF \times L$

Sup. aumento/diminuzione aperture= $S1+S2$

TOLLERANZA= $2\% \times \text{Sup. Fronte}$

$S1+S2 \leq \text{Sup. Fronte} \times 0,02$

